

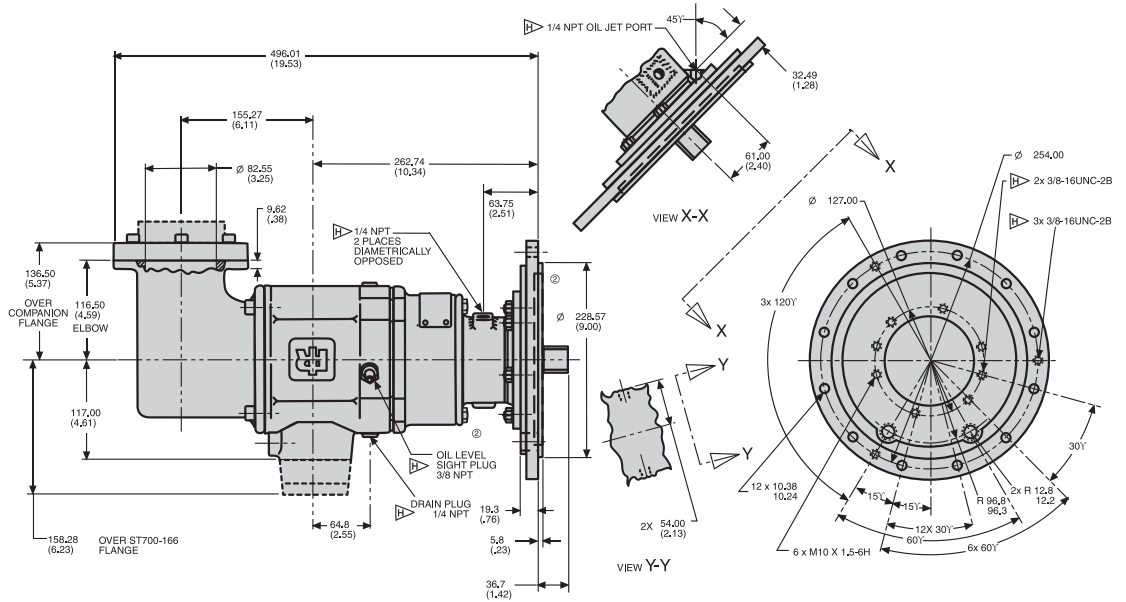
TURBINE STARTERS

DIMENSIONS

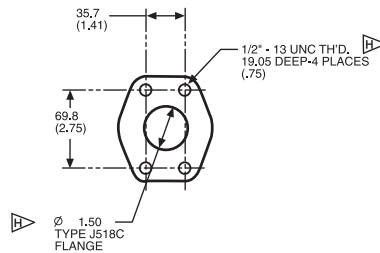
TS725GBDE-LE

Weight: 80 lbs (36.3 kg)

Note: All dimensions shown are for reference only. Specifications subject to change without notice.

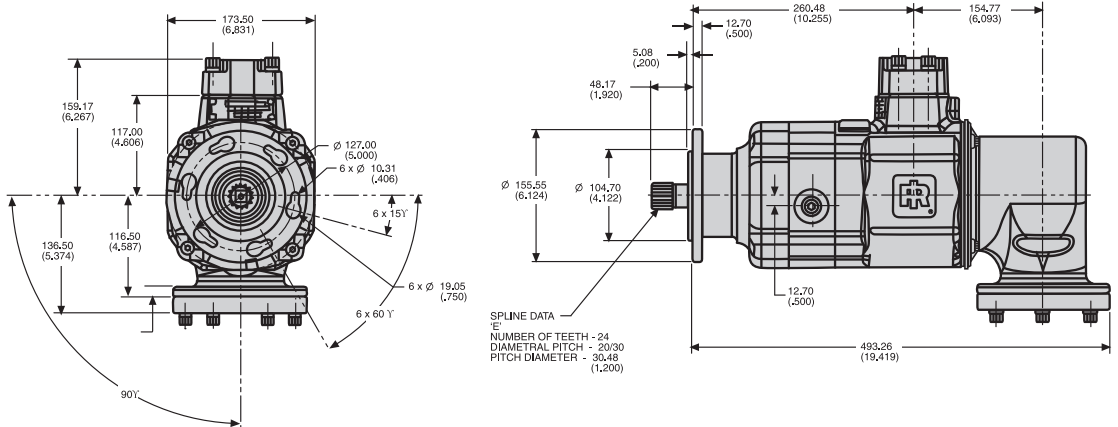


INLET FLANGE KIT (ST700-K166)



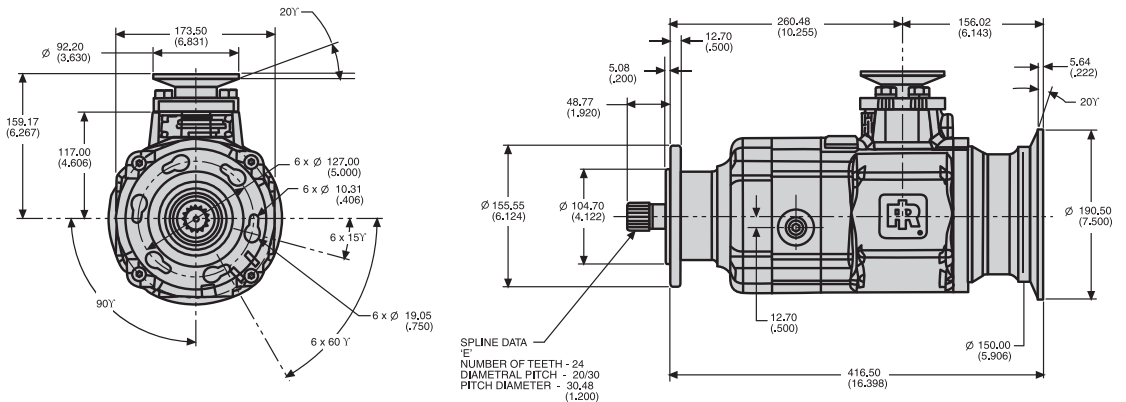
TS799BBEF-LE

Weight: 70 lbs (31.8 kg)



TS799BBEF-LM

Weight: 62 lbs (28.1 kg)



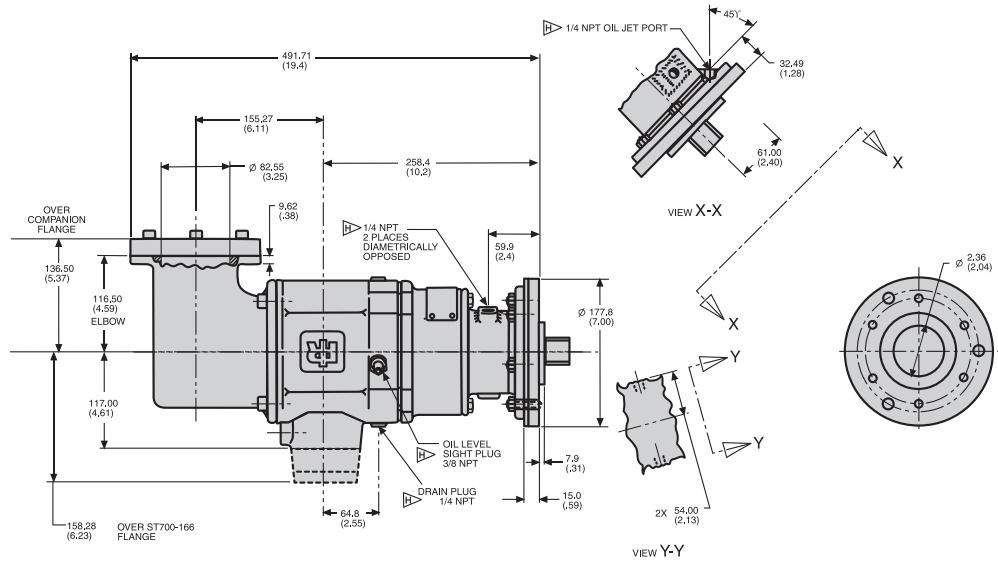
TURBINE STARTERS

DIMENSIONS

TS799GBFD-L

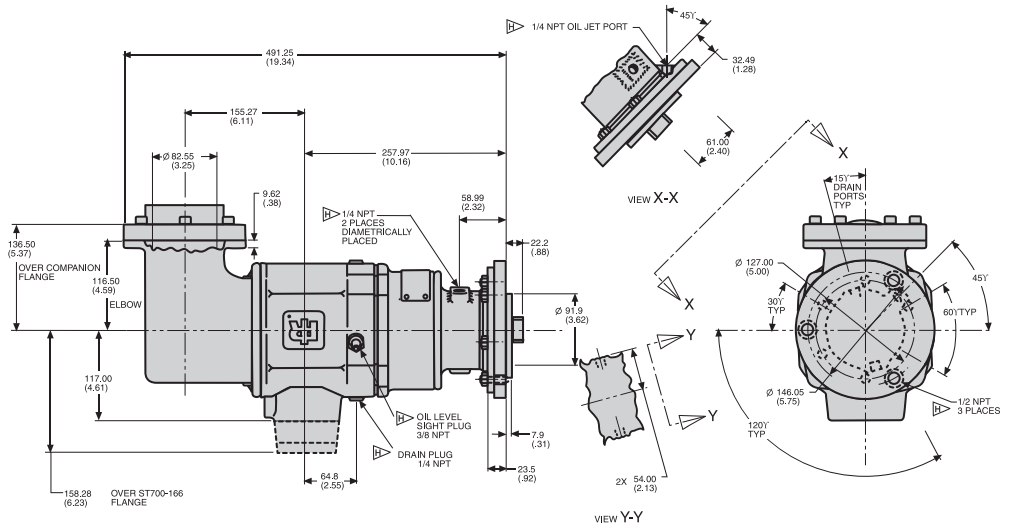
Weight: 70 lbs (31.8 kg)

Note: All dimensions shown are for reference only. Specifications subject to change without notice.



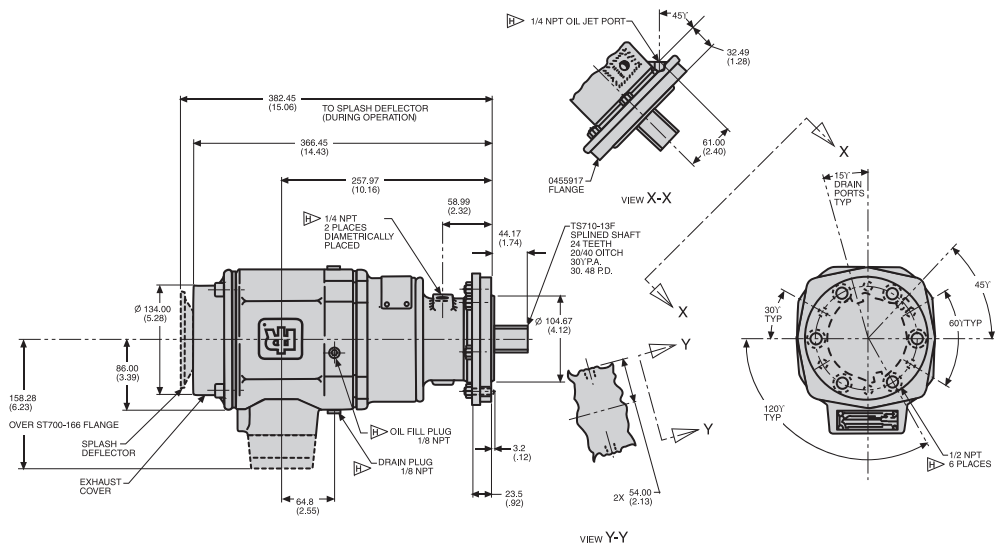
TS999GZCD-LE

Weight: 70 lbs (31.8 kg)



TS999GZFA-L

Weight: 58 lbs (26.3 kg)



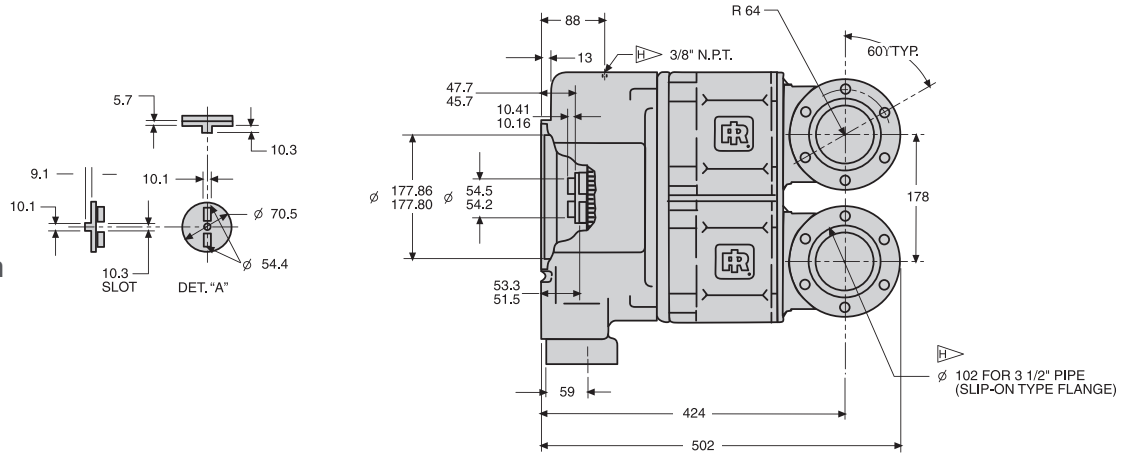
TURBINE STARTERS

DIMENSIONS

TS1400 TURBINE UNITS

Weight: 124 lbs. (56.2 kg)

Note: All dimensions shown are for reference only. Specifications subject to change without notice.



SINGLE MOTOR PERFORMANCE INFORMATION

Pressure psi (bar)	Breakaway Torque ft-lb (Nm)	Speed @ Max HP rpm	Max Power HP (kW)	Flow @ Max HP scfm (L/s)
TS725				
90 (6.2)	110 (149)	2000	18 (13)	330 (156)
150 (10.3)	180 (243)	2300	40 (30)	515 (243)
225 (15.5)	270 (365)	2500	65 (49)	750 (354)
TS750				
90 (6.2)	170 (230)	2200	30 (22)	850 (401)
120 (8.3)	240 (325)	2300	50 (37)	990 (467)
150 (10.3)	300 (407)	2500	70 (52)	1210 (571)
TS799G				
60 (4.1)	250 (339)	2400	55 (41)	1050 (496)
90 (6.2)	310 (420)	2500	70 (52)	1400 (661)
TS799B				
150 (10.3)	570 (773)	2500	130 (97)	2200 (1038)
TS999				
90 (6.2)	125 (169)	5500	71 (53)	1300 (614)

DUAL MOTOR PERFORMANCE INFORMATION

Pressure psi (bar)	Solar Part Number	Max Pressure psi (bar)	Breakaway Torque ft-lb (Nm)	Speed @ Max HP rpm	Max Power HP (kW)	Flow @ Max HP scfm (L/s)	Motor Arc
TS1400							
TS1401-102	190475-102	225 (15.5)	420 (567)	3100	124 (93)	1700 (802)	25%
TS1435	190475-301	225 (15.5)	459 (620)	3882	141 (105)	1900 (896)	35%
TS1450	190475-401	150 (10.3)	506 (683)	3034	146 (109)	2500 (1179)	50%

TURBINE STARTERS

TS ENGINE SELECTION GUIDE

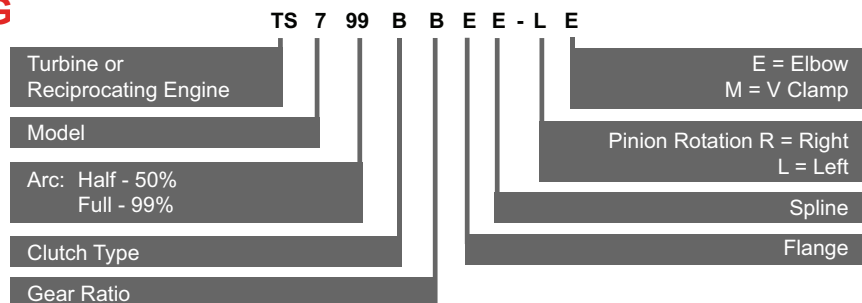
Engine	Part Number	Solar Part Number	Max Pressure psi (bar)
Solar Saturn	TS725GBBE-LE	190716-200	225 (15.5)
	TS725GBDE-LE	190716-100	225 (15.5)
	TS750GBBE-LE	-	150 (10.3)
Solar Centaur	TS1435	190475-301	225 (15.5)
	TS1450	190475-401	180 (12.2)
	TS1401-102	190475-102	225 (15.5)
Solar Taurus	TS1435	190475-301	225 (15.5)
	TS1450	190475-401	180 (12.2)
	TS1401-102	190475-102	225 (15.5)
Allison 570	TS799GBFD-L	-	90 (6.2)
Allison 501-KC	TS999GZFA-L	-	90 (6.2)
Allison 501-KB	TS999GZFA-L	-	90 (6.2)
Garret IE831	TS999GZCD-LE	-	90 (6.2)
Pratt & Whitney GG3/F13, GG4/G14	TS799BBEF-LE	-	150 (10.3)
	TS799BBEF-LM	-	150 (10.3)

This chart is a condensed list of engines that can be cranked with a starter. For a complete list, please contact Ingersoll Rand at NashCOE@irco.com.

TS700/TS900 OUTPUT SPLINE DATA







TS Part Number	Shaft Output Part Number	Teeth	Diametral Pitch	Pressure Angle	Pitch Diameter
TS725GBBE-LE	TS710-13E	24	20/30	30	30.48
TS725GBDE-LE	TS710-13E	24	20/30	30	30.48
TS750GBBE-LE	TS710-13E	24	20/30	30	30.48
TS799BBEF-LE	TS799-18E	24	20/30	30	30.48
TS799BBEF-LM	TS799-18E	24	20/30	30	30.48
TS799GBFD-L	4612834	16	20/30	30	20.32
TS999GZCD-LE	4612834	16	20/30	30	20.32
TS999GZFA-L	TS710A-13F	24	20/40	30	30.48

MODEL CODING



TURBINE STARTERS

PARTS AND ACCESSORIES

	Part Number	Description		Part Number	Description
	SRV150	1 1/2" Relay Valve for Air Applications		ST1000-267-24	1 1/2" Strainer Housing
	SRV150SS	1 1/2" Gas Rated Relay Valve		ST1000-267-32	2" Strainer Housing
	150BMP-1064	1/8", 150 psi Pressure Gauge		ST1000-266-24	1 1/2" Strainer (40 mesh)
				ST1000-266-32	2" Strainer (40 mesh)

GENUINE INGERSOLL RAND REPLACEMENT KITS

Tune Up Kit Part Number	Description	Tune Up Kit Part Number	Description
TS1400	–	TS700	–
TS1400-TK1	Seal and O-Ring Kit	TS700-RM1	Bearing and O-Ring Kit (includes TS700-TK1)
TS1401-RM1	Seals, Bearings and 2-25% Arc Motors	TS700-TK1	O-Ring Kit
TS1401-RM2	Seals, Bearings and 2-99% Arc Motors	–	–
TS1401-RM3	Seals, Bearings and 2-35% Arc Motors	–	–
TS1401-RM4	Seals, Bearings and 2-50% Arc Motors	–	–
TS1401-TK1	Seal and O-Ring Kit	–	–